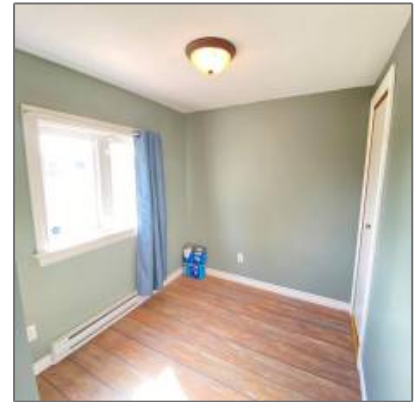


Single Family House For Sale

- 763 County Line Road- Margate- Prince Edward Island- Canada C0B1M0



Basic Details

Status: **Active**

Property Type: **Single Family**

Listing Type: **For Sale**

Residential Type: **House**

MLS® #: **202113206**

Price: **\$189,000**

Beds: **2**

Baths: **1**

Rooms: **Register to View**

Lot Area: **1.15 Sqft**

Location

Address: **763 County Line Road**

Country: **CA**

Province: **PE**

City: **Margate**

Postal Code: **C0B1M0**

Community: **Margate**

Complex/Subdivision: **Register to View**

Distance to Pub/Rapid Tr: **Register to View**

Dist to School/School Bus: **Register to View**

Site Influences: **Park, Playground, Shopping**

Features

- Fence: **Cleared**
- Outdoor Area Fixtures Removed Y/N
- Fixtures Rntd/Lsd? Locker
- Council Apprv Cats

Rooms

Room 1 Type: **Register to View**

Room 1 Level: **Register to View**

Room 1 Dimension: **Register to View**

Room 1: **Register to View**

Dimension 2:

Room 2 Type: **Register to View**

Room 2 Level: **Register to View**

Room 2 Dimension: **Register to View**

Room 2 Dimension 2: **Register to View**

Room 3 Type: **Register to View**

Room 3 Level: **Register to View**

Room 3 Dimension: **Register to View**

Room 3 Dimension 2: **Register to View**

Room 4 Type: **Register to View**

Room 4 Level: **Register to View**

Room 4 Dimension: **Register to View**

Room 4 Dimension 2: **Register to View**

Room 5 Type: **Register to View**

Room 5 Level: **Register to View**

Room 5 Dimension: **Register to View**

Room 5 Dimension 2: **Register to View**

Room 6 Type: **Register to View**

Room 6 Level: **Register to View**

Room 6 Dimension: **Register to View**

Room 6 Dimension 2: **Register to View**

Room 7 Type: **Register to View**

Room 7 Level: **Register to View**

Room 7 Dimension: **Register to View**

Room 7 Dimension 2: **Register to View**

Room 8 Type: **Register to View**

Room 8 Level: **Register to View**

Room 8 **Register to View**

Dimension:

Room 8 **Register to View**

Dimension 2:

Land

Water Supply: **Well**

Sewer: **Septic System**

Title to Land: **Freehold**

Lot Features: **Level**

Site Services: **Landscaped**

Dimensions: **1.1500|1 - 3 acres**

Building

Foundation: **Register to View**

Construction: **Register to View**

Roof: **Register to View**

Heating System: **Register to View**

of Kitchens: **Register to View**

of Parking Spaces: **Register to View**

Basement: **None**

Parking: **Register to View**

Exterior Finish: **Register to View**

Floor Finish: **Laminate**

Parking Access: **Register to View**

Fireplace Fueled by: **Register to View**

Heating Fuel: **Electric**

Style of Home: **Mini**

Open Parking Spaces: **Register to View**

Rain Screen: **Register to View**

Bath2 Ensuite?: **Register to View**

Bath3 Ensuite?: **Register to View**

Bath4 Ensuite?: **Register to View**

Bath5 Ensuite?: **Register to View**

Bath6 Ensuite?: **Register to View**

Bath7 Ensuite?: **Register to View**

Bath8 Ensuite?: **Register to View**

Bath1 #Pcs: **Register to View**

Bath2 #Pcs: **Register to View**

Bath Ensuite # Of Pcs: **Register to View**

Mgmt. Co Name: **Register to View**

Mgmt. Co
Phone#: **Register to View**

Approx. Yr of
Renos/Addns: **Register to View**

Mgr/Nominee
Approval: **Register to View**

Roughed-in
FP: **Register to View**

Bds In Bsmt: **Register to View**

Bds Not In Bsmt: **Register to View**

Parking Places -
Covered: **Register to View**

Units in
Development: **Register to View**

Tot Units in
Strata Plan: **Register to View**

Floor Area Fin -
Abv Main: **Register to View**

Floor Area Fin -
BLW Main: **Register to View**

Floor Area Fin -
Basement: **Register to View**

Floor Area Fin -
Total: **Register to View**

Floor Area -
Unfinished: **Register to View**

Crawl Height: **Register to View**

Full Height: **Register to View**

Part Height: **Register to View**

Measurement
Type: **Register to View**

Restricted Age: **Register to View**

of Pets: **Register to View**

or % of
Rentals Allowed: **Register to View**

Suite: **Register to View**

Maint Fee
Includes: **Register to View**

Directional Exp- **Register to View**

Faces:

Directional Exp
Rear Yard:

Register to View

Appliances:

**Stove, Dishwasher,
Dryer, Washer,
Microwave, Refri**

Sales [Data](#)

Sold Price: **Register to View**

Sold Date: **Register to View**

Original Price: **Register to View**

Entry Date: **Register to View**

DOM: **Register to View**

DOMLS: **Register to View**


Cumulative
DOM: **Register to View**


Cumulative
DOMLS: **Register to View**


Prev Price: **Register to View**


Sold Price per
SqFt: **Register to View**


Property [Rooms](#)


 Bedroom
(7 x 8)

 Bedroom
(9.11 x 15)

 Living room
(15 x 11)

 Kitchen
(7.9 x 11.1)

 Bath (# pieces 1-6)
(7.5 x 7.9)

 Dining room
(7.3 x 10.9)

Agent [Info](#)



Klein Group Real Estate

✉ exclusive@kleingroup.com

604-684-8844 - #204-345 Robson Street Vancouver, BC V6B 0H3

