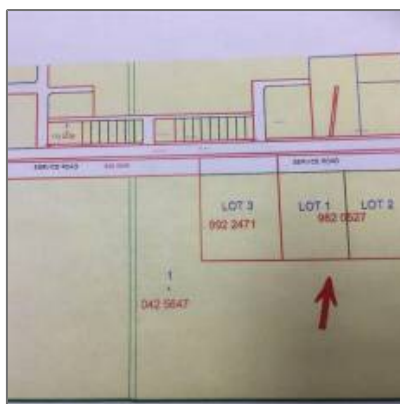


# Land For Sale

- 315 HWY 13 East, Rural Wetaskiwin County,  
Alberta, Canada T0C0A0



## Property Description

RARE GREAT FIND 4.13 acres of vacant land, JUST on the FRINGE of ALDER FLATS, located South and across highway 13 East from the service station. This is a GREAT SITE to build your DREAM HOME and enjoy COUNTRY LIVING at its BEST!!!! (id:15472)

## Basic Details

Property Type:	<b>Vacant land</b>
Listing Type:	<b>For Sale</b>
MLS® #:	<b>E4129923</b>
Price:	<b>\$39,900</b>
Lot Area:	<b>4.10 Acre</b>

## Location

Country: **CA**

Province: **AB**

City: **Rural Wetaskiwin  
County**

Postal Code: **T0C0A0**

Longitude: **W116° 59' 21"**

Latitude: **N52° 46' 8.1"**

Site Influences: **Playground,  
Schools, Shopping**

## Agent Info



Klein Group Real Estate  
✉ [exclusive@kleingroup.com](mailto:exclusive@kleingroup.com)

604-684-8844 - #204-345 Robson Street Vancouver, BC V6B 0H3

---

