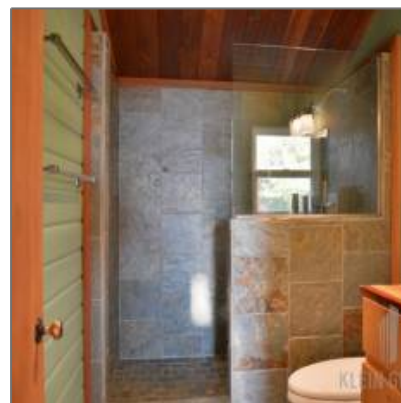


# Single Family For Sale

1,067 Sqft - 4600 Cameron Road, Pender Harbour,  
British Columbia, Canada v0N 2H1



## Basic Details

Status:	<b>Sold</b>
Property Type:	<b>Single Family</b>
Listing Type:	<b>For Sale</b>
Price:	<b>\$1,688,000</b>
Beds:	<b>3</b>
Baths:	<b>2</b>
Rooms:	<b>Register to View</b>
Sq Ft:	<b>1,067 Sqft</b>

## Location

Address:	<b>4600 Cameron Road</b>
Street Number:	<b>4600</b>
Street:	<b>Cameron Road</b>
Country:	<b>CA</b>
Province:	<b>BC</b>
City:	<b>Pender Harbour</b>
Postal Code:	<b>v0N 2H1</b>
Complex/Subdivision:	<b>Register to View</b>
Distance to Pub/Rapid Tr:	<b>Register to View</b>
Dist to School/School Bus:	<b>Register to View</b>

## Features

✓ Outdoor Area	✓ Fixtures Removed Y/N
✓ Fixtures Rntd/Lsd?	✓ Locker
✓ Council Apprv	✓ Cats
✓ Dogs	✓ Roughed In Plumbing

## Rooms

Room 1 Type:	<b>Register to View</b>
Room 1 Level:	<b>Register to View</b>
Room 1 Dimension:	<b>Register to View</b>
Room 1 Dimension 2:	<b>Register to View</b>
Room 2 Type:	<b>Register to View</b>

Room 2 Level:	<a href="#">Register to View</a>
Room 2 Dimension:	<a href="#">Register to View</a>
Room 2 Dimension 2:	<a href="#">Register to View</a>
Room 3 Type:	<a href="#">Register to View</a>
Room 3 Level:	<a href="#">Register to View</a>
Room 3 Dimension:	<a href="#">Register to View</a>
Room 3 Dimension 2:	<a href="#">Register to View</a>
Room 4 Type:	<a href="#">Register to View</a>
Room 4 Level:	<a href="#">Register to View</a>
Room 4 Dimension:	<a href="#">Register to View</a>
Room 4 Dimension 2:	<a href="#">Register to View</a>
Room 5 Type:	<a href="#">Register to View</a>
Room 5 Level:	<a href="#">Register to View</a>
Room 5 Dimension:	<a href="#">Register to View</a>
Room 5 Dimension 2:	<a href="#">Register to View</a>
Room 6 Type:	<a href="#">Register to View</a>
Room 6 Level:	<a href="#">Register to View</a>
Room 6 Dimension:	<a href="#">Register to View</a>
Room 6 Dimension 2:	<a href="#">Register to View</a>
Room 7 Type:	<a href="#">Register to View</a>
Room 7 Level:	<a href="#">Register to View</a>
Room 7 Dimension:	<a href="#">Register to View</a>
Room 7 Dimension 2:	<a href="#">Register to View</a>
Room 8 Type:	<a href="#">Register to View</a>
Room 8 Level:	<a href="#">Register to View</a>
Room 8 Dimension:	<a href="#">Register to View</a>

		Room 8 Dimension 2:	<a href="#">Register to View</a>
Land		Building	
Zoning:	RU-1B	Foundation:	<a href="#">Register to View</a>
		Construction:	<a href="#">Register to View</a>
		Roof:	<a href="#">Register to View</a>
		Heating System:	<a href="#">Register to View</a>
		# of Kitchens:	<a href="#">Register to View</a>
		# of Parking Spaces:	<a href="#">Register to View</a>
		Parking:	<a href="#">Register to View</a>
		Exterior Finish:	<a href="#">Register to View</a>
		Parking Access:	<a href="#">Register to View</a>
		Fireplace Fueled by:	<a href="#">Register to View</a>
		Open Parking Spaces:	<a href="#">Register to View</a>
		Rain Screen:	<a href="#">Register to View</a>
		Bath2 Ensuite?:	<a href="#">Register to View</a>
		Bath3 Ensuite?:	<a href="#">Register to View</a>
		Bath4 Ensuite?:	<a href="#">Register to View</a>
		Bath5 Ensuite?:	<a href="#">Register to View</a>
		Bath6 Ensuite?:	<a href="#">Register to View</a>
		Bath7 Ensuite?:	<a href="#">Register to View</a>
		Bath8 Ensuite?:	<a href="#">Register to View</a>
		Bath1 #Pcs:	<a href="#">Register to View</a>
		Bath2 #Pcs:	<a href="#">Register to View</a>
		Bath Ensuite # Of Pcs:	<a href="#">Register to View</a>
		Mgmt. Co Name:	<a href="#">Register to View</a>
		Mgmt. Co Phone#:	<a href="#">Register to View</a>
		Approx. Yr of Renos/Addns:	<a href="#">Register to View</a>
		Mgr/Nominee Approval:	<a href="#">Register to View</a>

# Roughed-in  
FP: [Register to View](#)

Bds In Bsmt: [Register to View](#)

Bds Not In Bsmt: [Register to View](#)

Parking Places -  
Covered: [Register to View](#)

Units in  
Development: [Register to View](#)

Tot Units in  
Strata Plan: [Register to View](#)

Floor Area Fin -  
Abv Main: [Register to View](#)

Floor Area Fin -  
BLW Main: [Register to View](#)

Floor Area Fin -  
Basement: [Register to View](#)

Floor Area Fin -  
Total: [Register to View](#)

Floor Area -  
Unfinished: [Register to View](#)

Crawl Height: [Register to View](#)

Full Height: [Register to View](#)

Part Height: [Register to View](#)

Measurement  
Type: [Register to View](#)

Restricted Age: [Register to View](#)

# of Pets: [Register to View](#)

# or % of  
Rentals Allowed: [Register to View](#)

Suite: [Register to View](#)

Maint Fee  
Includes: [Register to View](#)

Directional Exp-  
Faces: [Register to View](#)

Directional Exp  
Rear Yard: [Register to View](#)

## Financial

Tax Year: **2014**

Gross Taxes: **\$4,717**


## Sales [Data](#)

Sold Price: [Register to View](#)

Sold Date: [Register to View](#)

Sale Type:	Lease	Original Price:	Register to View
		Entry Date:	Register to View
		DOM:	Register to View
		DOMLS:	Register to View
		Cumulative DOM:	Register to View
		Cumulative DOMLS:	Register to View
		Prev Price:	Register to View
		Sold Price per SqFt:	Register to View

Agent [Info](#)



Eugen Klein

✉ eklein@kleingroup.com

604-684-8844 - #204-345 Robson Street Vancouver, BC V6B 0H3

