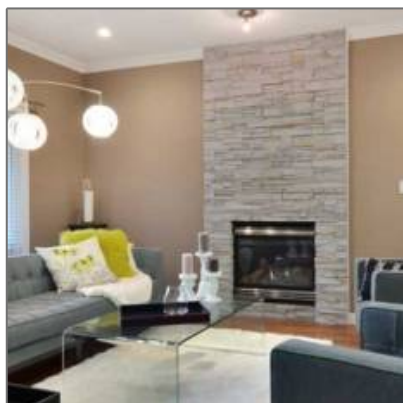


Single Family For Sale

3,882 Sqft - 1462 Chamberlain Drive, North
Vancouver, British Columbia, Canada V7K 1P6



Basic Details

| | |
|----------------|-------------------------|
| Status: | Sold |
| Property Type: | Single Family |
| Listing Type: | For Sale |
| Price: | \$1,349,000 |
| Beds: | 6 |
| Baths: | 5 |
| Rooms: | Register to View |
| Sq Ft: | 3,882 Sqft |
| Lot Area: | 6,027 Sqft |

Location

| | |
|----------------------------|-------------------------------|
| Address: | 1462 Chamberlain Drive |
| Street Number: | 1462 |
| Street: | Chamberlain Drive |
| Country: | CA |
| Province: | BC |
| City: | North Vancouver |
| Postal Code: | V7K 1P6 |
| Community: | Lynn Valley |
| Complex/Subdivision: | Register to View |
| Distance to Pub/Rapid Tr: | Register to View |
| Dist to School/School Bus: | Register to View |

Features

| | |
|----------------------|------------------------|
| ✓ Outdoor Area | ✓ Fixtures Removed Y/N |
| ✓ Fixtures Rntd/Lsd? | ✓ Locker |
| ✓ Council Apprv | ✓ Cats |
| ✓ Dogs | ✓ Roughed In Plumbing |

Rooms

| | |
|---------------------|-------------------------|
| Room 1 Type: | Register to View |
| Room 1 Level: | Register to View |
| Room 1 Dimension: | Register to View |
| Room 1 Dimension 2: | Register to View |

| | |
|---------------------|----------------------------------|
| Room 2 Type: | Register to View |
| Room 2 Level: | Register to View |
| Room 2 Dimension: | Register to View |
| Room 2 Dimension 2: | Register to View |
| Room 3 Type: | Register to View |
| Room 3 Level: | Register to View |
| Room 3 Dimension: | Register to View |
| Room 3 Dimension 2: | Register to View |
| Room 4 Type: | Register to View |
| Room 4 Level: | Register to View |
| Room 4 Dimension: | Register to View |
| Room 4 Dimension 2: | Register to View |
| Room 5 Type: | Register to View |
| Room 5 Level: | Register to View |
| Room 5 Dimension: | Register to View |
| Room 5 Dimension 2: | Register to View |
| Room 6 Type: | Register to View |
| Room 6 Level: | Register to View |
| Room 6 Dimension: | Register to View |
| Room 6 Dimension 2: | Register to View |
| Room 7 Type: | Register to View |
| Room 7 Level: | Register to View |
| Room 7 Dimension: | Register to View |
| Room 7 Dimension 2: | Register to View |
| Room 8 Type: | Register to View |
| Room 8 Level: | Register to View |

Land

Zoning: **RS-4**

Frontage Length: **48.5**

Depth: **124**

Room 8

Dimension:

Register to View

Room 8

Dimension 2:

Register to View

Building

Foundation: **Register to View**

Construction: **Register to View**

Roof: **Register to View**

Heating System: **Register to View**

of Kitchens: **Register to View**

of Parking Spaces: **Register to View**

Parking: **Register to View**

Exterior Finish: **Register to View**

Parking Access: **Register to View**

Fireplace Fueled by: **Register to View**

Open Parking Spaces: **Register to View**

Rain Screen: **Register to View**

Bath2 Ensuite?: **Register to View**

Bath3 Ensuite?: **Register to View**

Bath4 Ensuite?: **Register to View**

Bath5 Ensuite?: **Register to View**

Bath6 Ensuite?: **Register to View**

Bath7 Ensuite?: **Register to View**

Bath8 Ensuite?: **Register to View**

Bath1 #Pcs: **Register to View**

Bath2 #Pcs: **Register to View**

Bath Ensuite # Of Pcs: **Register to View**

Mgmt. Co Name: **Register to View**

Mgmt. Co Phone#: **Register to View**

Approx. Yr of Renos/Addns: **Register to View**

| | |
|----------------------------|----------------------------------|
| Mgr/Nominee Approval: | Register to View |
| # Roughed-in FP: | Register to View |
| Bds In Bsmt: | Register to View |
| Bds Not In Bsmt: | Register to View |
| Parking Places - Covered: | Register to View |
| Units in Development: | Register to View |
| Tot Units in Strata Plan: | Register to View |
| Floor Area Fin - Abv Main: | Register to View |
| Floor Area Fin - BLW Main: | Register to View |
| Floor Area Fin - Basement: | Register to View |
| Floor Area Fin - Total: | Register to View |
| Floor Area - Unfinished: | Register to View |
| Crawl Height: | Register to View |
| Full Height: | Register to View |
| Part Height: | Register to View |
| Measurement Type: | Register to View |
| Restricted Age: | Register to View |
| # of Pets: | Register to View |
| # or % of Rentals Allowed: | Register to View |
| Suite: | Register to View |
| Maint Fee Includes: | Register to View |
| Directional Exp-Faces: | Register to View |
| Directional Exp Rear Yard: | Register to View |

| | |
|-------------------------|-------------------------|
| Sold Price: | Register to View |
| Sold Date: | Register to View |
| Original Price: | Register to View |
| Entry Date: | Register to View |
| DOM: | Register to View |
| DOMLS: | Register to View |
| Cumulative DOM: | Register to View |
| Cumulative DOMLS: | Register to View |
| Prev Price: | Register to View |
| Sold Price per SqFt: | Register to View |

Agent [Info](#)



Olga Tarasenko

✉ olga@kleingroup.com

604-684-8844 - #204-345 Robson Street Vancouver, BC V6B 0H3

