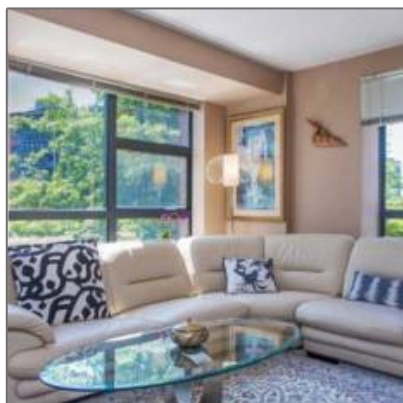


# Single Family For Sale

1,166 Sqft - 206 - 212 Davie Street, Vancouver,  
British Columbia, Canada V6B 5Z4



## Basic [Details](#)

Status:	<b>Sold</b>
Property Type:	<b>Single Family</b>
Listing Type:	<b>For Sale</b>
Price:	<b>\$580,000</b>
Beds:	<b>2</b>
Baths:	<b>2</b>
Rooms:	<b>Register to View</b>
Sq Ft:	<b>1,166 Sqft</b>

## Location

Address:	<b>206 - 212 Davie Street</b>
Unit #:	<b>206</b>
Street Number:	<b>212</b>
Street:	<b>Davie Street</b>
Country:	<b>CA</b>
Province:	<b>BC</b>
City:	<b>Vancouver</b>
Postal Code:	<b>V6B 5Z4</b>
Community:	<b>Yaletown</b>
Complex/Subdivision:	<b>Register to View</b>
Distance to Pub/Rapid Tr:	<b>Register to View</b>
Dist to School/School Bus:	<b>Register to View</b>

## Features

✓ Outdoor Area	✓ Fixtures Removed Y/N
✓ Fixtures Rntd/Lsd?	✓ Locker
✓ Council Apprv	✓ Cats
✓ Dogs	✓ Roughed In Plumbing

## Rooms

Room 1 Type:	<b>Register to View</b>
Room 1 Level:	<b>Register to View</b>
Room 1 Dimension:	<b>Register to View</b>

Room 1 Dimension 2:	<a href="#">Register to View</a>
Room 2 Type:	<a href="#">Register to View</a>
Room 2 Level:	<a href="#">Register to View</a>
Room 2 Dimension:	<a href="#">Register to View</a>
Room 2 Dimension 2:	<a href="#">Register to View</a>
Room 3 Type:	<a href="#">Register to View</a>
Room 3 Level:	<a href="#">Register to View</a>
Room 3 Dimension:	<a href="#">Register to View</a>
Room 3 Dimension 2:	<a href="#">Register to View</a>
Room 4 Type:	<a href="#">Register to View</a>
Room 4 Level:	<a href="#">Register to View</a>
Room 4 Dimension:	<a href="#">Register to View</a>
Room 4 Dimension 2:	<a href="#">Register to View</a>
Room 5 Type:	<a href="#">Register to View</a>
Room 5 Level:	<a href="#">Register to View</a>
Room 5 Dimension:	<a href="#">Register to View</a>
Room 5 Dimension 2:	<a href="#">Register to View</a>
Room 6 Type:	<a href="#">Register to View</a>
Room 6 Level:	<a href="#">Register to View</a>
Room 6 Dimension:	<a href="#">Register to View</a>
Room 6 Dimension 2:	<a href="#">Register to View</a>
Room 7 Type:	<a href="#">Register to View</a>
Room 7 Level:	<a href="#">Register to View</a>
Room 7 Dimension:	<a href="#">Register to View</a>
Room 7 Dimension 2:	<a href="#">Register to View</a>
Room 8 Type:	<a href="#">Register to View</a>

## Land

Zoning: **CD-1**

Room 8 Level: **Register to View**

Room 8  
Dimension: **Register to View**

Room 8  
Dimension 2: **Register to View**

## Building

Foundation: **Register to View**

Construction: **Register to View**

Roof: **Register to View**

Heating System: **Register to View**

# of Kitchens: **Register to View**

# of Parking  
Spaces: **Register to View**

Parking: **Register to View**

Exterior Finish: **Register to View**

Parking Access: **Register to View**

Fireplace Fueled  
by: **Register to View**

Open Parking  
Spaces: **Register to View**

Rain Screen: **Register to View**

Bath2 Ensuite?: **Register to View**

Bath3 Ensuite?: **Register to View**

Bath4 Ensuite?: **Register to View**

Bath5 Ensuite?: **Register to View**

Bath6 Ensuite?: **Register to View**

Bath7 Ensuite?: **Register to View**

Bath8 Ensuite?: **Register to View**

Bath1 #Pcs: **Register to View**

Bath2 #Pcs: **Register to View**

Bath Ensuite #  
Of Pcs: **Register to View**

Mgmt. Co Name: **Register to View**

Mgmt. Co  
Phone#: **Register to View**

Approx. Yr of  
Renos/Addns: **Register to View**

Mgr/Nominee  
Approval: **Register to View**

# Roughed-in  
FP: **Register to View**

Bds In Bsmt: **Register to View**

Bds Not In Bsmt: **Register to View**

Parking Places -  
Covered: **Register to View**

Units in  
Development: **Register to View**

Tot Units in  
Strata Plan: **Register to View**

Floor Area Fin -  
Abv Main: **Register to View**

Floor Area Fin -  
BLW Main: **Register to View**

Floor Area Fin -  
Basement: **Register to View**

Floor Area Fin -  
Total: **Register to View**

Floor Area -  
Unfinished: **Register to View**

Crawl Height: **Register to View**

Full Height: **Register to View**

Part Height: **Register to View**

Measurement  
Type: **Register to View**

Restricted Age: **Register to View**

# of Pets: **Register to View**

# or % of  
Rentals Allowed: **Register to View**

Strata Maint  
Fee: **\$465**

Suite: **Register to View**

Maint Fee  
Includes: **Register to View**

Directional Exp-  
Faces: **Register to View**

Directional Exp  
Rear Yard:

**Register to View**

## Financial

Tax Year: **2013**

Gross Taxes: **\$1,959**

## Sales [Data](#)

Sold Price: **Register to View**

Sold Date: **Register to View**

Original Price: **Register to View**

Entry Date: **Register to View**

DOM: **Register to View**

DOMLS: **Register to View**

Cumulative  
DOM: **Register to View**

Cumulative  
DOMLS: **Register to View**

Prev Price: **Register to View**

Sold Price per  
SqFt: **Register to View**

## Agent [Info](#)



Olga Tarasenko

✉ [olga@kleingroup.com](mailto:olga@kleingroup.com)

604-684-8844 - #204-345 Robson Street Vancouver, BC V6B 0H3

