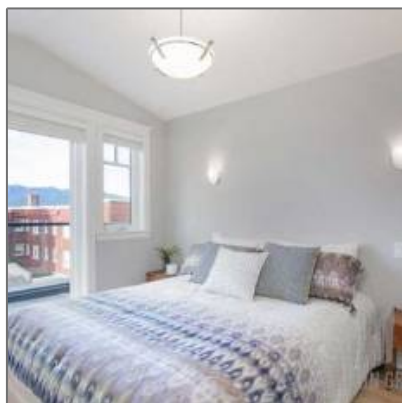


# Single Family For Sale

- 2619 W 1st Avenue, Vancouver, British Columbia, Canada



## Basic [Details](#)

Status: **Expired**

Property Type: **Single Family**

Listing Type: **For Sale**

Price: **\$1,750,000**

Beds: **4**

Rooms: **Register to View**

## Location

Address: **2619 W 1st Avenue**

Street Number: **2619**

Street: **W 1st Avenue**

Country: **CA**

Province: **BC**

City: **Vancouver**

Complex/Subdivision: **Register to View**

Distance to Pub/Rapid Tr: **Register to View**

Dist to School/School Bus: **Register to View**

## Features

✓ Outdoor Area	✓ Fixtures Removed Y/N
✓ Fixtures Rntd/Lsd?	✓ Locker
✓ Council Apprv	✓ Cats
✓ Dogs	✓ Roughed In Plumbing

## Rooms

Room 1 Type: **Register to View**

Room 1 Level: **Register to View**

Room 1 Dimension: **Register to View**

Room 1 Dimension 2: **Register to View**

Room 2 Type: **Register to View**

Room 2 Level: **Register to View**

Room 2 Dimension:	<a href="#">Register to View</a>
Room 2 Dimension 2:	<a href="#">Register to View</a>
Room 3 Type:	<a href="#">Register to View</a>
Room 3 Level:	<a href="#">Register to View</a>
Room 3 Dimension:	<a href="#">Register to View</a>
Room 3 Dimension 2:	<a href="#">Register to View</a>
Room 4 Type:	<a href="#">Register to View</a>
Room 4 Level:	<a href="#">Register to View</a>
Room 4 Dimension:	<a href="#">Register to View</a>
Room 4 Dimension 2:	<a href="#">Register to View</a>
Room 5 Type:	<a href="#">Register to View</a>
Room 5 Level:	<a href="#">Register to View</a>
Room 5 Dimension:	<a href="#">Register to View</a>
Room 5 Dimension 2:	<a href="#">Register to View</a>
Room 6 Type:	<a href="#">Register to View</a>
Room 6 Level:	<a href="#">Register to View</a>
Room 6 Dimension:	<a href="#">Register to View</a>
Room 6 Dimension 2:	<a href="#">Register to View</a>
Room 7 Type:	<a href="#">Register to View</a>
Room 7 Level:	<a href="#">Register to View</a>
Room 7 Dimension:	<a href="#">Register to View</a>
Room 7 Dimension 2:	<a href="#">Register to View</a>
Room 8 Type:	<a href="#">Register to View</a>
Room 8 Level:	<a href="#">Register to View</a>
Room 8 Dimension:	<a href="#">Register to View</a>
Room 8	<a href="#">Register to View</a>

## Building

Foundation:	<a href="#">Register to View</a>
Construction:	<a href="#">Register to View</a>
Roof:	<a href="#">Register to View</a>
Heating System:	<a href="#">Register to View</a>
# of Kitchens:	<a href="#">Register to View</a>
# of Parking Spaces:	<a href="#">Register to View</a>
Parking:	<a href="#">Register to View</a>
Exterior Finish:	<a href="#">Register to View</a>
Parking Access:	<a href="#">Register to View</a>
Fireplace Fueled by:	<a href="#">Register to View</a>
Open Parking Spaces:	<a href="#">Register to View</a>
Rain Screen:	<a href="#">Register to View</a>
Bath2 Ensuite?:	<a href="#">Register to View</a>
Bath3 Ensuite?:	<a href="#">Register to View</a>
Bath4 Ensuite?:	<a href="#">Register to View</a>
Bath5 Ensuite?:	<a href="#">Register to View</a>
Bath6 Ensuite?:	<a href="#">Register to View</a>
Bath7 Ensuite?:	<a href="#">Register to View</a>
Bath8 Ensuite?:	<a href="#">Register to View</a>
Bath1 #Pcs:	<a href="#">Register to View</a>
Bath2 #Pcs:	<a href="#">Register to View</a>
Bath Ensuite # Of Pcs:	<a href="#">Register to View</a>
Mgmt. Co Name:	<a href="#">Register to View</a>
Mgmt. Co Phone#:	<a href="#">Register to View</a>
Approx. Yr of Renos/Addns:	<a href="#">Register to View</a>
Mgr/Nominee Approval:	<a href="#">Register to View</a>
# Roughed-in	<a href="#">Register to View</a>

Sales [Data](#)

Sold Price:	<a href="#">Register to View</a>
Sold Date:	<a href="#">Register to View</a>
Original Price:	<a href="#">Register to View</a>
Entry Date:	<a href="#">Register to View</a>
DOM:	<a href="#">Register to View</a>
DOMLS:	<a href="#">Register to View</a>
Cumulative DOM:	<a href="#">Register to View</a>
Cumulative DOMLS:	<a href="#">Register to View</a>
Prev Price:	<a href="#">Register to View</a>
Sold Price per SqFt:	<a href="#">Register to View</a>

FP:

Bds In Bsmt:	<a href="#">Register to View</a>
Bds Not In Bsmt:	<a href="#">Register to View</a>
Parking Places - Covered:	<a href="#">Register to View</a>
Units in Development:	<a href="#">Register to View</a>
Tot Units in Strata Plan:	<a href="#">Register to View</a>
Floor Area Fin - Abv Main:	<a href="#">Register to View</a>
Floor Area Fin - BLW Main:	<a href="#">Register to View</a>
Floor Area Fin - Basement:	<a href="#">Register to View</a>
Floor Area Fin - Total:	<a href="#">Register to View</a>
Floor Area - Unfinished:	<a href="#">Register to View</a>
Crawl Height:	<a href="#">Register to View</a>
Full Height:	<a href="#">Register to View</a>
Part Height:	<a href="#">Register to View</a>
Measurement Type:	<a href="#">Register to View</a>
Restricted Age:	<a href="#">Register to View</a>
# of Pets:	<a href="#">Register to View</a>
# or % of Rentals Allowed:	<a href="#">Register to View</a>
Suite:	<a href="#">Register to View</a>
Maint Fee Includes:	<a href="#">Register to View</a>
Directional Exp-Faces:	<a href="#">Register to View</a>
Directional Exp Rear Yard:	<a href="#">Register to View</a>

## Agent [Info](#)



Olga Tarasenko

✉ [olga@kleingroup.com](mailto:olga@kleingroup.com)

