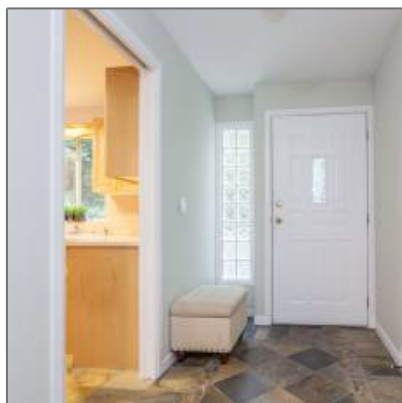


# Single Family For Sale

1,688 Sqft - 57 - 181 Ravine Drive, Port Moody,  
British Columbia, Canada V3H 4T3



## Basic Details

Status:	<b>Sold</b>
Property Type:	<b>Single Family</b>
Listing Type:	<b>For Sale</b>
Price:	<b>\$688,000</b>
Beds:	<b>2</b>
Baths:	<b>3</b>
Rooms:	<b>Register to View</b>
Half Baths:	<b>1</b>
Sq Ft:	<b>1,688 Sqft</b>
Year Built:	<b>1990</b>

## Location

Address:	<b>57 - 181 Ravine Drive</b>
Unit #:	<b>57</b>
Street Number:	<b>181</b>
Street:	<b>Ravine Drive</b>
Country:	<b>CA</b>
Province:	<b>BC</b>
City:	<b>Port Moody</b>
Postal Code:	<b>V3H 4T3</b>
Complex/Subdivision:	<b>Register to View</b>
Distance to Pub/Rapid Tr:	<b>Register to View</b>
Dist to School/School Bus:	<b>Register to View</b>

## Features

✓ Outdoor Area	✓ Fixtures Removed Y/N
✓ Fixtures Rntd/Lsd?	✓ Locker
✓ Council Apprv	✓ Cats
✓ Dogs	✓ Roughed In Plumbing

## Rooms

Room 1 Type:	<b>Register to View</b>
Room 1 Level:	<b>Register to View</b>
Room 1 Dimension:	<b>Register to View</b>
Room 1 Dimension 2:	<b>Register to View</b>

Room 2 Type:	<b>Register to View</b>
Room 2 Level:	<b>Register to View</b>
Room 2 Dimension:	<b>Register to View</b>
Room 2 Dimension 2:	<b>Register to View</b>
Room 3 Type:	<b>Register to View</b>
Room 3 Level:	<b>Register to View</b>
Room 3 Dimension:	<b>Register to View</b>
Room 3 Dimension 2:	<b>Register to View</b>
Room 4 Type:	<b>Register to View</b>
Room 4 Level:	<b>Register to View</b>
Room 4 Dimension:	<b>Register to View</b>
Room 4 Dimension 2:	<b>Register to View</b>
Room 5 Type:	<b>Register to View</b>
Room 5 Level:	<b>Register to View</b>
Room 5 Dimension:	<b>Register to View</b>
Room 5 Dimension 2:	<b>Register to View</b>
Room 6 Type:	<b>Register to View</b>
Room 6 Level:	<b>Register to View</b>
Room 6 Dimension:	<b>Register to View</b>
Room 6 Dimension 2:	<b>Register to View</b>
Room 7 Type:	<b>Register to View</b>
Room 7 Level:	<b>Register to View</b>
Room 7 Dimension:	<b>Register to View</b>
Room 7 Dimension 2:	<b>Register to View</b>
Room 8 Type:	<b>Register to View</b>
Room 8 Level:	<b>Register to View</b>

## Land

Zoning: **RM3**

Room 8  
Dimension:

**Register to View**

Room 8  
Dimension 2:

**Register to View**

## Building

Foundation: **Register to View**

Construction: **Register to View**

Roof: **Register to View**

Building Name: **The Viewpoint**

Heating System: **Register to View**

# of Kitchens: **Register to View**

# of Parking  
Spaces: **Register to View**

Parking: **Register to View**

Exterior Finish: **Register to View**

Parking Access: **Register to View**

Fireplace Fueled  
by: **Register to View**

Open Parking  
Spaces: **Register to View**

Rain Screen: **Register to View**

Bath2 Ensuite?: **Register to View**

Bath3 Ensuite?: **Register to View**

Bath4 Ensuite?: **Register to View**

Bath5 Ensuite?: **Register to View**

Bath6 Ensuite?: **Register to View**

Bath7 Ensuite?: **Register to View**

Bath8 Ensuite?: **Register to View**

Bath1 #Pcs: **Register to View**

Bath2 #Pcs: **Register to View**

Bath Ensuite #  
Of Pcs: **Register to View**

Mgmt. Co Name: **Register to View**

Mgmt. Co  
Phone#: **Register to View**

Approx. Yr of Renos/Addns:	<b>Register to View</b>
Mgr/Nominee Approval:	<b>Register to View</b>
# Roughed-in FP:	<b>Register to View</b>
Bds In Bsmt:	<b>Register to View</b>
Bds Not In Bsmt:	<b>Register to View</b>
Parking Places - Covered:	<b>Register to View</b>
Units in Development:	<b>Register to View</b>
Tot Units in Strata Plan:	<b>Register to View</b>
Floor Area Fin - Abv Main:	<b>Register to View</b>
Floor Area Fin - BLW Main:	<b>Register to View</b>
Floor Area Fin - Basement:	<b>Register to View</b>
Floor Area Fin - Total:	<b>Register to View</b>
Floor Area - Unfinished:	<b>Register to View</b>
Crawl Height:	<b>Register to View</b>
Full Height:	<b>Register to View</b>
Part Height:	<b>Register to View</b>
Measurement Type:	<b>Register to View</b>
Restricted Age:	<b>Register to View</b>
# of Pets:	<b>Register to View</b>
# or % of Rentals Allowed:	<b>Register to View</b>
Suite:	<b>Register to View</b>
Maint Fee Includes:	<b>Register to View</b>
Directional Exp-Faces:	<b>Register to View</b>
Directional Exp Rear Yard:	<b>Register to View</b>

Financial

Tax Year:	2017
Gross Taxes:	\$2,238

Sales [Data](#)

Sold Price:	Register to View
Sold Date:	Register to View
Original Price:	Register to View
Entry Date:	Register to View
DOM:	Register to View
DOMLS:	Register to View
Cumulative DOM:	Register to View
Cumulative DOMLS:	Register to View
Prev Price:	Register to View
Sold Price per SqFt:	Register to View

Agent [Info](#)

<div>No Image</div>	<div> empty@empty.com</div>
---------------------	--

604-684-8844 - #204-345 Robson Street Vancouver, BC V6B 0H3

